

## Queen's Marqe District- Muntz Panels

Location Halifax, Nova Scotia  
Designer/Architect The Armour Group Inc & Sperry Design Inc.  
Duration June 2019 - June 2020

Scope - Soheil Mosun Limited was contracted by the Armour Group and Queen's Marqe Development to fabricate, etch, patina and supply over a thousand (1,000) panels for interior decorative walls and exterior curtain wall use at the newly developed Queen's Marqe in Halifax, Nova Scotia.

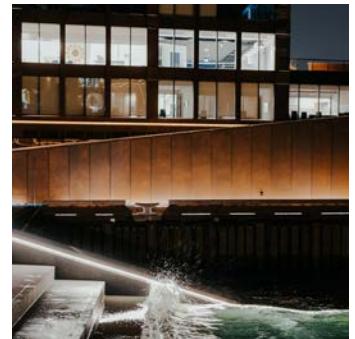
Highlights - Curtain wall panels without etching cover large portions of the development with the etched panels being used to adorn the ground level elevations where shops, residences, hotel and restaurants with high traffic are. Panels are Muntz and are of varying sizes dependent on application requirements at site.



*Etched panels at entrance to The Residences*



*Patinated Muntz panels with etched artwork spanning across multiple panels*



*Curtain wall panels along the steps into the water*



*Patinated curtain wall panels at the entrance to the Muir Hotel at Queen's Marqe*



*Etching detail on panel at entrance*