



## Midtown Center - Washington, DC, Patinated Copper Panels

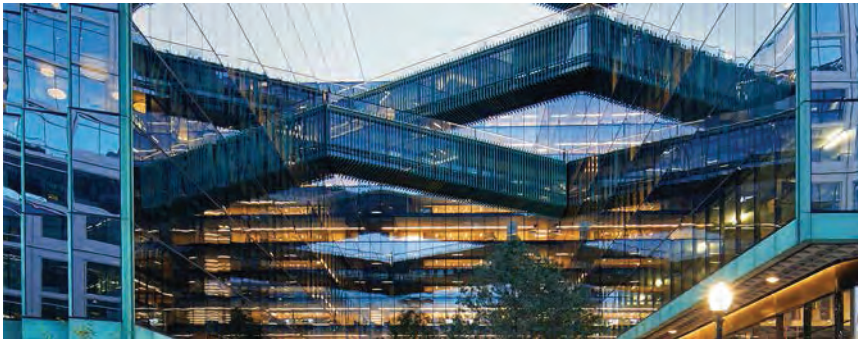
Location Washington DC, USA  
Designer/Architect SHoP Architects Inc. and WDG Architecture  
Duration May 2016 - Sept 2019

Scope - Soheil Mosun Limited was contracted to supply approximately (400) custom patinated copper panels for the Midtown Center building located at 1100 15th Street in Washington, DC. These panels are flat and perforated and are incorporated into the overall building envelope and curtain wall as well as on the bridges between the two buildings. SML worked closely with all stakeholders to develop the bespoke custom patina finish.

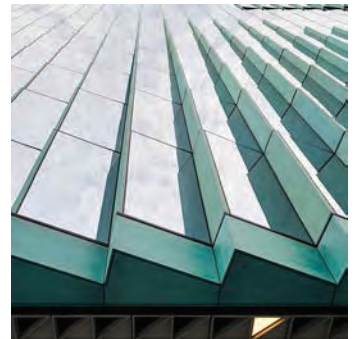
Highlights - Panels are of multiple different sizes and shapes made of 1.5mm thick, formed and patinated Copper panels. Patinated green copper panels placed over 3 phases that provide coverage of approximately 7000 sq. ft. Panels are mounted with alloy 316 stainless steel clips & stiffeners in .078" material thickness for durability. Also included is a painted aluminum trim and stiffener assembly along with approximately 50,000 copper clips.



*Detail of paneled bridges and trim*



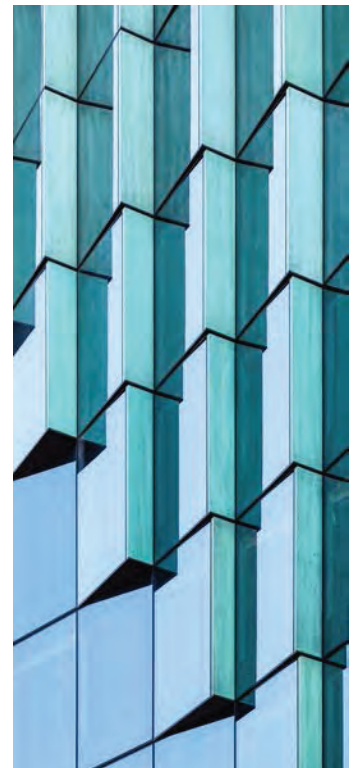
*The Copper Paneled bridges that run between the two buildings comprising the Midtown Center*



*Detail of panels viewed from below*



*The Midtown Center at 1100 15th street in Washington DC*



*Copper panels and glass curtain wall detail*