

Concord Park Place - Map Wall Artwork

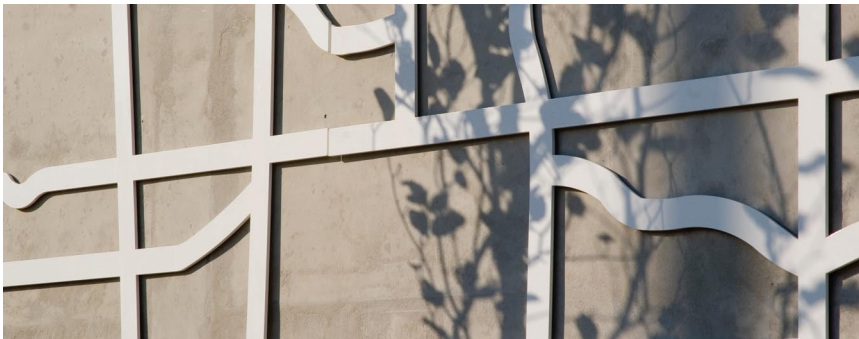
Location Toronto, Ontario
Designer/Architect Derek Root
Duration May 2010 - Aug 2011

Scope - Soheil Mosun Limited was contracted to fabricate and install this 47 meter long Map Wall Artwork along the South and East elevations of Concord Park Place in Toronto, facing Esther Shiner Blvd.

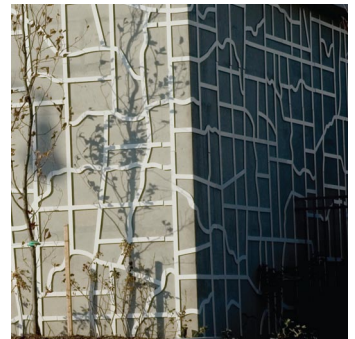
Highlights - This Map Wall Artwork is laser cut from 1/4" carbon steel panels, zinc plated and white satin finish powder coated. The Map Wall is mechanically fastened to the plinth wall of the building. The East and South portions of this wall are paneled with the artwork that wraps around both elevations including the parking garage exterior wall along Esther Shiner Blvd and continues around into the enclosed garden of Concord Park Place.



Mechanical fastening with 1/4" relief from wall



Detail of a portion of the Map Wall Artwork along the South elevation



Detail of South and East elevation wrapping



The Map Wall Artwork at Concord Park Place in Toronto



Detail view of laser artwork