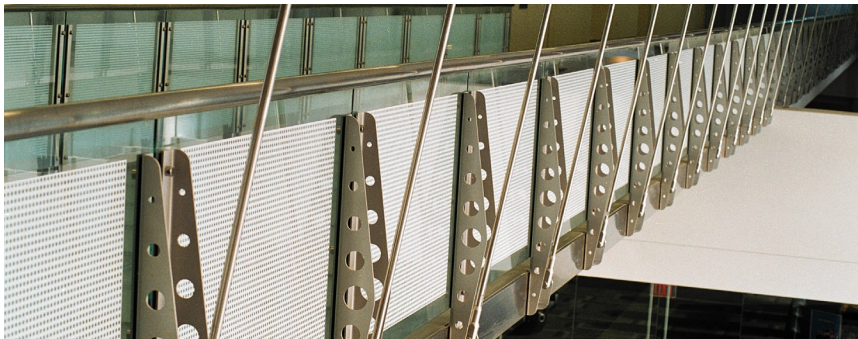


General Motors Vehicle Engineering Center - Glass Bridge

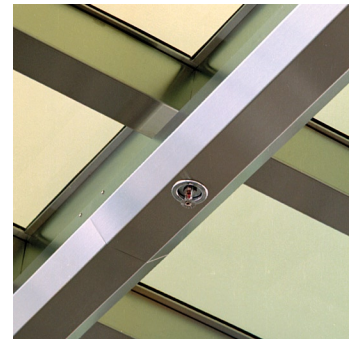
Location Warren, Michigan
Designer / Architect Kaplan McLaughlin Diaz
Duration May 2001 - Jan 2003

Scope - Soheil Mosun Limited was contracted to complete the design, engineering, fabrication and installation of the balustrades, column covers, monumental staircases, reception desk, balcony guardrails, glass bridge and other architectural elements.

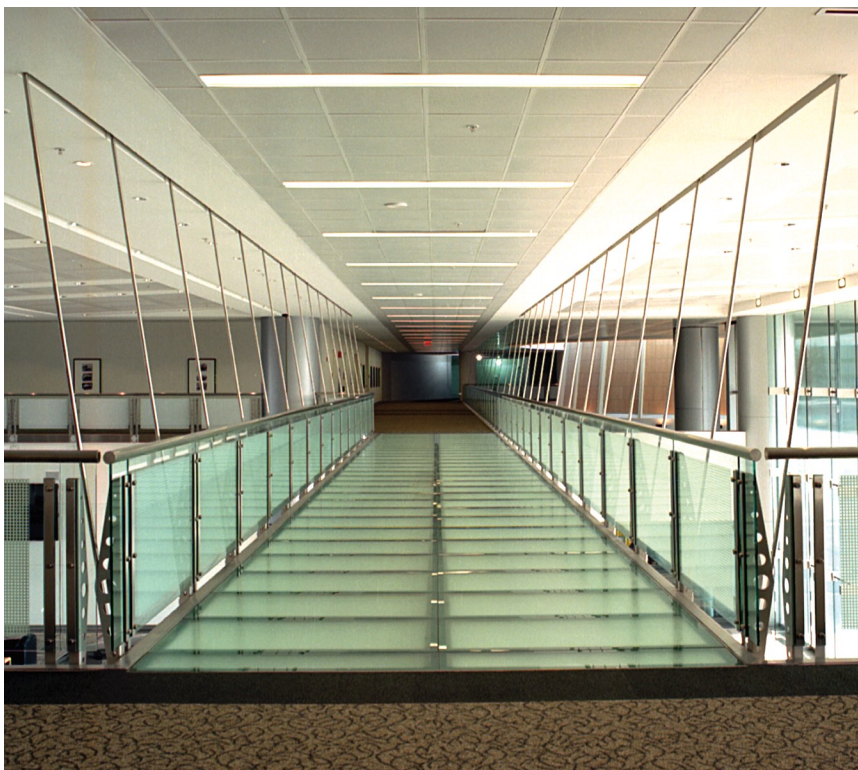
Highlights - Featured Glass Bridge won the 2003 Steel Systems Excellence Award, which recognizes excellence in design, engineering, fabrication and erection of steel structures.



Professional installation



integrated fire system



75'-0" suspension bridge



Solid support



Modern fasteners and framing